

A HIGH-PERFORMANCE 2-METER TRANSVERTER

Modular approach makes construction and modification easy

By Bob Lombardi, WB4EHS, 1874 Palmer Drive,
Melbourne, Florida 32935

It seems that many VHF/UHF enthusiasts say they became interested in this part of the spectrum after having worked just about all of the DX available on HF. This wasn't the case for me. The possibilities of 2-meter operation appealed to me on their own merits. There is OSCAR, moonbounce, meteor scatter, SSB, CW, and a host of propagation modes to explore.

My interest in these modes of communication led me to review their requirements. I realized that commercial rigs available at the time didn't have the two main features I was looking for — a low noise figure and a selectable CW filter. Like many before me, I decided to build a transverter for my HF rig. These were my design goals:

- low noise figure, in keeping with the state of the art;
- output power in the range of 5 watts, with excellent linearity (third-order IMD at least 30 dB down);
- good rejection of a nearby NOAA weather radio relay (at least 40 dB down);
- moderate gain (enough to overcome the front end noise of the HF rig);
- good dynamic range.

I adopted a modular design approach advocated by Joe Reisert, W1JR, and others. I like this design because it gives me the ability to get sections working and tied together quickly. This, in turn, makes the project seem less like a constant uphill battle. Also, the modular method with its replaceable sections is a great benefit when you come up with a better design. The block diagram of the transverter appears in Figure 1.

Receive strip

The receive side input (Figure 2) is a GaAsFET low-noise amplifier (LNA) that uses a circuit similar to Reisert's¹ and to those in general FET applications notes. The device is a single gate MGF-1402 made by Mitsubishi; it's available from several sources.* The 10-k resistor on the input bleeds off static buildup. Any value around 10 k will work, as long as you use a carbon composition resistor. (I had a persistent and elusive oscillation; it was caused by the metal film resistor I was using!) I used diodes around the regulator to protect against regulator latch-up or inductive spikes from the T/R relay. The amplifier had a noise figure of under 0.75 dB and a gain of 23 dB, as measured on an Ailtech noise figure meter and HP network analyzer.

The filter (shown in Figure 3) was described in an earlier article.² I wanted the filter to be narrowband enough to pass all 4 MHz of the band, and still provide over 40 dB of rejection at 162.55 MHz. It provides nearly 55 dB, at a cost of about 5 dB of insertion loss. At this point, however, there was gain to burn to meet the design goals of about 10 dB of gain in the complete transverter.

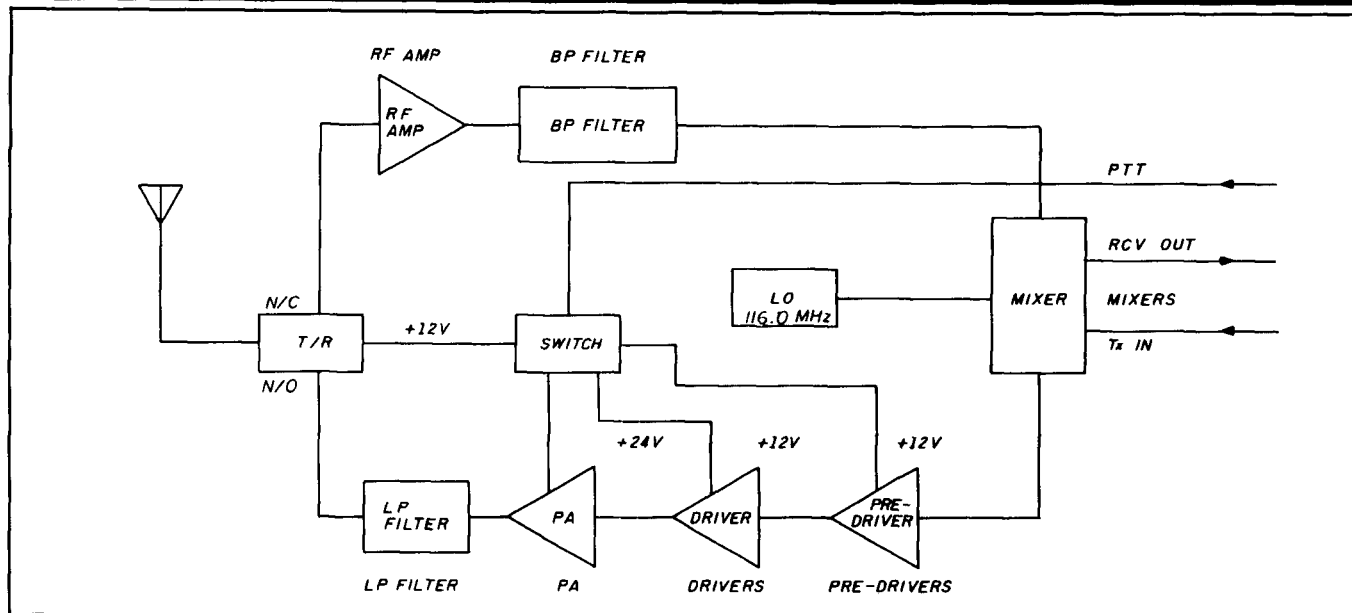
A 116-MHz overtone crystal oscillator provides the LO function for both sides of the transverter (Figure 4). The oscillator is a common base design, largely based on Reisert.³ The output was measured at +13 dBm, allowing the use of a two-way power splitter to provide LO to both mixers.

The receive mixer is a Mini-Circuits SRA-1000 (see Figure 5). It is essentially the same as their SRA-1 in this application. The IF output goes into a diplexer and 24 to 34-MHz band-pass filter. In band, the diplexer (the parallel-resonant circuit and 51-ohm resistor) presents an open circuit, and no signal flows in the resistor. As the frequency changes the reactive components tend to short out the tank circuit, allowing signal to flow into the termination and to ground. The mixer sees the 51-ohm resistor at these frequencies.

The receiver input stage is largely responsible for determining the system noise figure, and the noise figure is degraded by any losses in front of it. If you're new to the field of low-noise design, this explains what must seem like the unconventional design of the transverter; i.e., the amplifier ahead of the filter. (This is a common design technique in microwave receiver

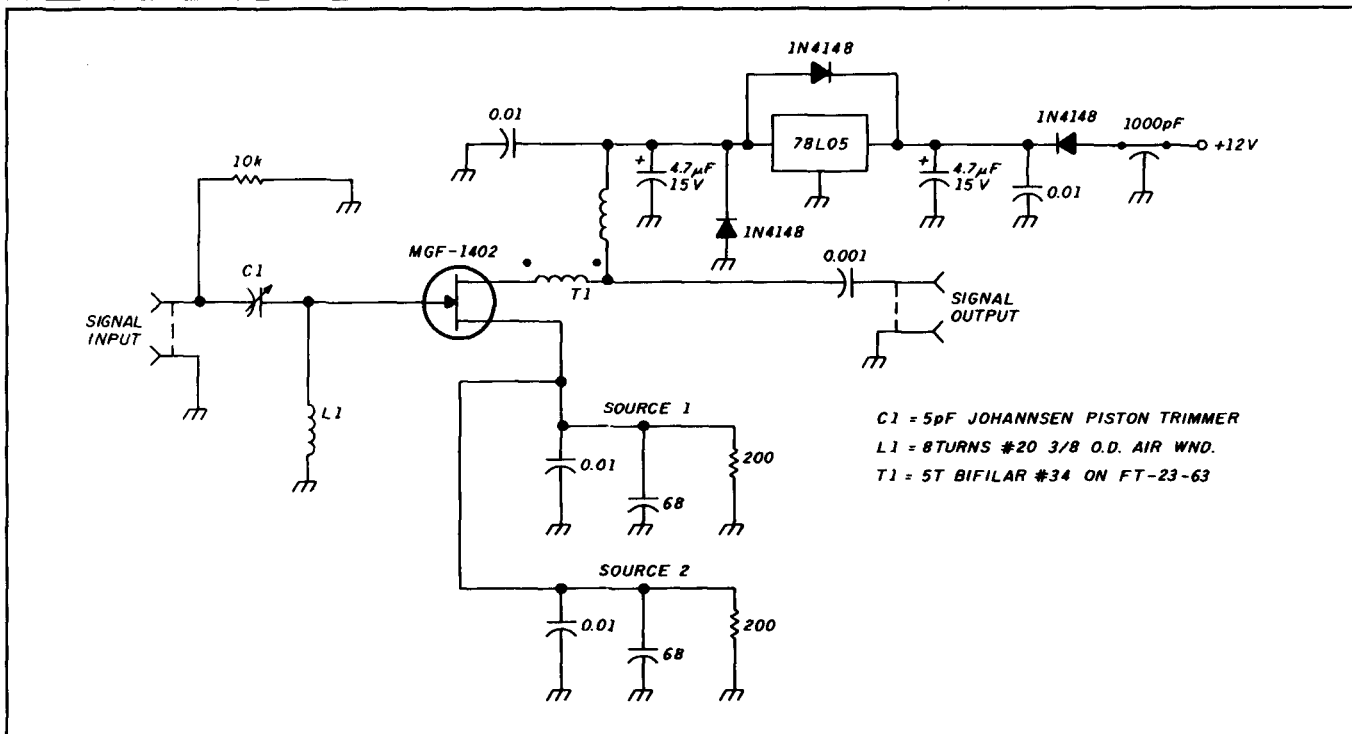
*See parts sources at the end of the article. Ed.

FIGURE 1



Block diagram of the complete transverter.

FIGURE 2



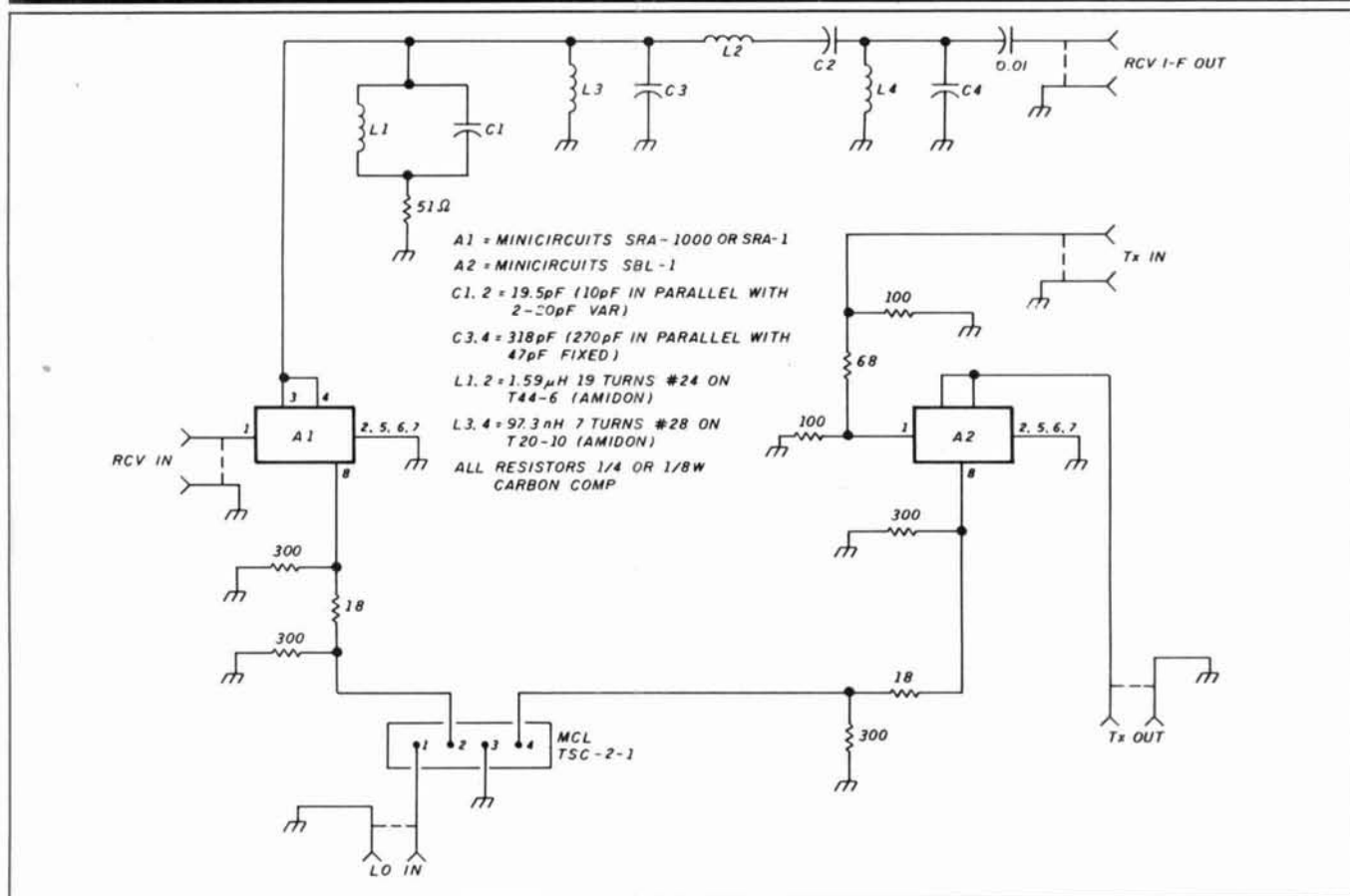
Schematic of the receive input RF amplifier.

design, like TVROs.) To minimize the effects of losses in front of the amp, I used foam-flex (hardline) coax as the feedline, with short flexible jumpers of RG-214/U where required.

Other hams have told me on the air that my low noise figure is unnecessary in 2-meter SSB because ground noise

predominates. While this maybe true, my idea all along was that receiver noise shouldn't be a limiting factor if I wanted to swing my antennas up for OSCAR — or anything else I might try. When you add that to the high intercept point of the GaAs-FET front end, and the resulting improvement in dynamic

FIGURE 5



Receive and transmit mixer schematic.

2-watt carbon composition

Any value over 100 k (used as coil form)

1/8-watt carbon composition, 5 percent

18 ohm	2
300 ohm	4
68 ohm	1
100 ohm	2

SEMICONDUCTORS

Diodes

1N4148 general purpose	6 (widely available)
1N4004 rectifier	1
1N757 9-volt zener	1
1N751 5-volt zener	1

Transistors

2N2222 NPN	1
2N3553 NPN	1 RF Parts Company
2N5109 NPN	1 RF Parts Company
2N5179 NPN	1 RF Parts Company
MGF-1402 GaAsFET	1 RF Parts Company
MRF-134 powerFET	1 RF Parts Company

OTHERS

MWA-130 amplifier modules	2 Communications Concepts
78L05 5-volt regulator	1 (widely available)
78L08 or 78M08 8-volt regulator	1 (widely available)
LM-311 comparator	1 (widely available)

MISCELLANEOUS PARTS

Ferrites

FT-23-63	1 Amidon
Beads, Ferroxcube type 4A6	4 Amidon (cross-reference)
Two-hole balun (for RFC on driver assembly)	
BLN 43-2402	3 Amidon
Ferroxcube VK200-19/4B	1 Amidon (cross-reference)

TOROIDS

T44-6	2 Amidon
T20-10	2 Amidon

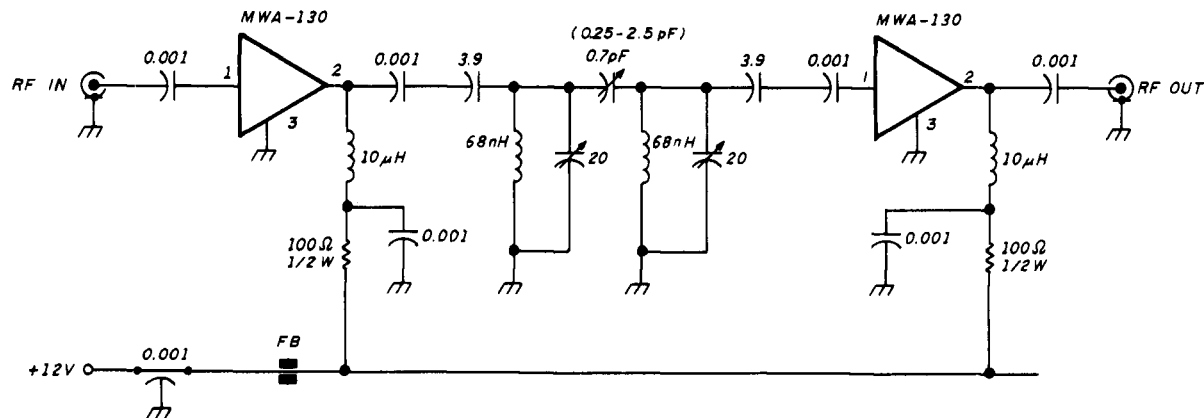
Note: The exact ferrite bead used in most cases isn't critical. It should present several microhenries of inductance at the operating frequency.

OTHER PARTS

SBL-1 mixer	1 Mini-Circuits, others
SRA-1	1
TSC-2-1 power splitter	1 Mini-Circuits, others

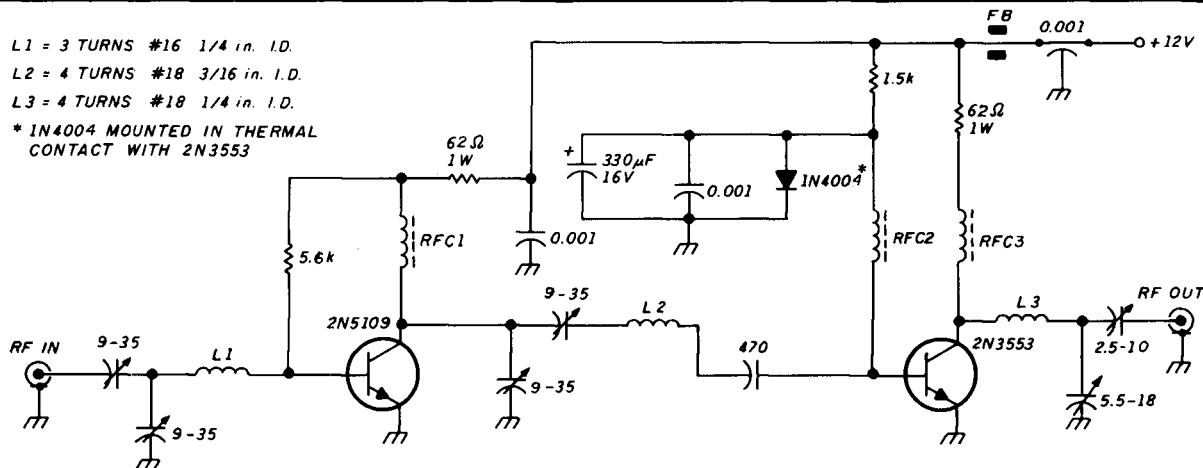
116-MHz fifth overtone crystal	1 ICM
5-k multiturn pot	1 Radio Shack
T/R power switch relay 12 volt	1 Radio Shack
T/R coaxial relay 12 volt	1 Communications Concepts
RF coaxial connectors	15 SMA female (as required)
Coaxial jumpers	(as required)
Boxes	(as required)
Feedthrough capacitors	0.001 μF 50 volts
	(as required, 1 per box)
10μH molded chokes	2

FIGURE 6



Transmit predriver schematic.

FIGURE 7



Driver chain schematic. RFC 1-4 = 4 turns of no. 20 wire through a two-hole ferrite balun. Amidon no. BLN 43-2402.

range, the GaAsFET still seems the most logical choice.

My initial test of the receive side yielded good results. While conducting tests with WA4GHK (15 miles south), it was easy to copy K4DZP in Miami (over 160 miles south) — despite my makeshift indoor antenna!

Transmit chain

The transmit portion of the transverter presents its own problems; the biggest is linearity. A rule of thumb for diode ring mixers (like the SBL-1 used here) is to have the input signal at least 10 dB below the LO for best linearity (see Figure 5). Because one of my design goals was to achieve very good linearity from the transmitter, the first thing I did was pad the input drive (+3 dBm) from my HF rig. The resulting level was about -7 dBm, 14 dB lower than the LO drive. Since all the pads were made with the closest value resistors, and the mixer itself contributes loss, I measured the conversion loss of the transmit mixer. It was 17.7 dB.

The pre-driver stage in Figure 6 is supposed to recover

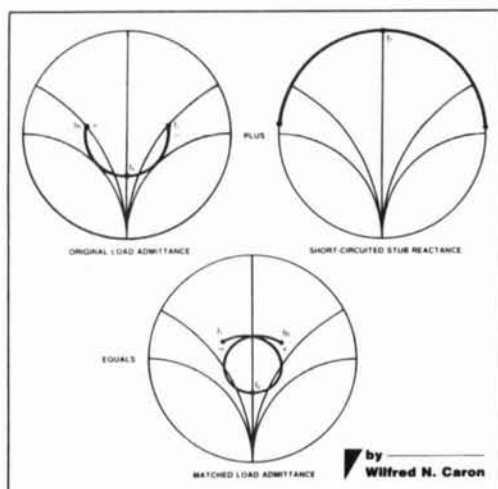
all of the signal lost in the conversion, provide enough filtering to remove significant power on the image frequency, and reduce LO feedthrough. I used MWA-130 amplifiers, modular 50-ohm in-and-out devices in TO-5 cans, because they are easy to use and were available on a surplus board that I scavenged. The power out at this point is 4 mW (+6 dBm).

The actual drivers are two transistors, a 2N5109 and a 2N3553 (see Figure 7). The first device is a well-known VHF linear transistor; the second is a 28-volt, TO-5 can device capable of 2 watts if run class C. This was originally to have been a three-transistor strip with 1 watt out from a third 2N3553, but I was never able to get them to more than 500 mW and still remain linear with a 12-volt supply. I tried many variations of bias circuits, matching networks, and pc layouts. The two-device strip I settled on produces 18 dB of gain, or about 250 mW out.

The final amp is a Motorola MRF-134 TMOS powerFET that delivers just over 4 watts out and a clean, linear signal (third-order intermod down just over 30 dB). See Figure 8 for details.

ANTENNA IMPEDANCE MATCHING

\$15.00



New from ARRL

Following the hard-cover style of *Transmission Line Transformers*, and *Yagi Antenna Design*, *Antenna Impedance Matching* is written with the advanced amateur, antenna design engineer and technician in mind, but even if you don't have any special expertise you'll be able to develop very sophisticated systems. This is probably the most comprehensive book ever written on the use of Smith Charts™ in solving impedance matching problems. This 224-page book is of importance to those who want to maximize antenna effectiveness. A properly matched antenna as the termination for a line minimizes feedline losses, and power can be fed to such a line without the need for a matching network at the line input. *Antenna Impedance Matching* is a "must" for the antenna designer and serious amateur. The price is \$15, please add \$3.50 for shipping and handling.



THE AMERICAN RADIO RELAY LEAGUE, INC.
225 MAIN STREET
NEWINGTON, CT 06111

✓ 134

EVERY ISSUE of

HAM RADIO

now available on microfiche!

The entire run of *Ham Radio Magazine* (March, 1968 thru last year) is ready to ship to you in one, easy to use format.

Our 24x microfiche is easy to read and very compact. We offer a hand held reader for \$75, and a desk model for \$200. Libraries have these readers.

As a bonus, you will receive *Ham Radio Horizons* (3/77 thru 12/80) free.

Everything is included, front cover to back - ads too!

Annual updates will be offered for \$10.

Send \$185 payment (visa/mc accepted) to:

BUCKMASTER

BUCKMASTER PUBLISHING

Route 3, Box 56

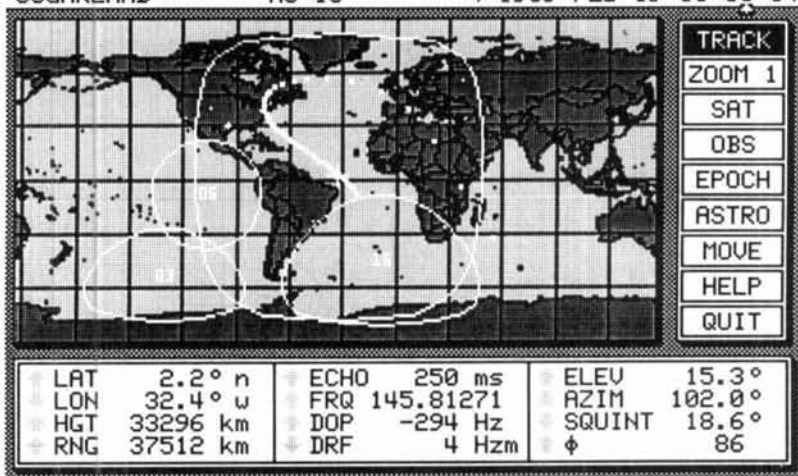
Mineral, Virginia 23117

703/894-5777 visa/mc 800/282-5628

GET A BIRD'S EYE VIEW

From GrafTrak II™ and your IBM® PC

SUGARLAND AO-13 → 1989 FEB 19 06:55:14



GrafTrak II™ provides real-time graphic display of a flat projection map which moves under the selected satellite(sat)/Sun/Moon/star coverage circle and updates once per second. Features include spherical projection views, graphic screen dumps to an IBM/Epson/Okidata or HP LaserJet Series II printer, selectable lat/lon grid intervals, disk command files, automatic control of antenna rotators with full 180 degree elevation, coverage swath display for weather sats, multiple range circles, automatic sat switching, real-time ground track display, and squint angle display.

Silicon Ephemeris™ provides tabular data output to the screen, printer, or disk file for the following operating modes: 1 observer(obs) to 16 sats, 16 obs to 1 sat, schedule for 1 obs to 1 sat, window between 2 obs and 1 sat, rise and set times for 1 sat, time ordered rise and set times for 16 sats, Almanac for Sun and Moon, 16 obs to Sun/Moon, schedule for 1 obs to Moon, window between 2 obs and Moon, schedule for 1 obs to Sun, and optical visibility schedule.

The package includes an editor program used to construct and modify sat/obs data base files. In addition, a program to update data base files from bulletin boards, complete source code for a compatible rotator and receiver control program and several other utilities are included.

Requires an IBM PC, PC/XT, PC/AT, or true compatible, an IBM Color/Graphics Monitor Adaptor or true compatible, optional but recommended 80x87 math coprocessor, minimum 512K RAM, DOS 2.0 or later, and either two 360K floppy drives or one 360K floppy and one hard drive; the programs are not copy protected.

The complete package is \$395 (List Price). Call for quotation. Check, money order, MasterCard, or VISA accepted.

Silicon Solutions, Inc. • P.O. Box 742546 • Houston, Texas 77274-2546 • (713) 777-3057

IBM is a registered trademark of IBM Corporation.

GrafTrak II and Silicon Ephemeris are trademarks of Silicon Solutions, Inc.

High
Performance

vhf/uhf preamps



Receive Only	Freq. Range (MHz)	N.F. (dB)	Gain (dB)	1 dB Comp. (dBm)	Device Type	Price
P28VD	28-30	<1.1	15	0	DGFET	\$29.95
P50VD	50-54	<1.3	15	0	DGFET	\$29.95
P50VDG	50-54	<0.5	24	+12	GaAsFET	\$79.95
P144VD	144-148	<1.5	15	0	DGFET	\$29.95
P144VDA	144-148	<1.0	15	0	DGFET	\$37.95
P144VDG	144-148	<0.5	24	+12	GaAsFET	\$79.95
P220VD	220-225	<1.8	15	0	DGFET	\$29.95
P220VDA	220-225	<1.2	15	0	DGFET	\$37.95
P220VDG	220-225	<0.5	20	+12	GaAsFET	\$79.95
P432VD	420-450	<1.8	15	-20	Bipolar	\$32.95
P432VDA	420-450	<1.1	17	-20	Bipolar	\$49.95
P432VDG	420-450	<0.5	16	+12	GaAsFET	\$79.95
Inline (rf switched)						
SP28VD	28-30	<1.2	15	0	DGFET	\$59.95
SP50VD	50-54	<1.4	15	0	DGFET	\$59.95
SP50VDG	50-54	<0.55	24	+12	GaAsFET	\$109.95
SP144VD	144-148	<1.6	15	0	DGFET	\$59.95
SP144VDA	144-148	<1.1	15	0	DGFET	\$67.95
SP144VDG	144-148	<0.55	24	+12	GaAsFET	\$109.95
SP220VD	220-225	<1.9	15	0	DGFET	\$59.95
SP220VDA	220-225	<1.3	15	0	DGFET	\$67.95
SP220VDG	220-225	<0.55	20	+12	GaAsFET	\$109.95
SP432VD	420-450	<1.9	15	-20	Bipolar	\$62.95
SP432VDA	420-450	<1.2	17	-20	Bipolar	\$79.95
SP432VDG	420-450	<0.55	16	+12	GaAsFET	\$109.95

Every preamplifier is precision aligned on ARR's Hewlett Packard HP8970A/HP348A state-of-the-art noise figure meter. RX only preamplifiers are for receive applications only. Inline preamplifiers are rf switched (for use with transceivers) and handle 25 watts transmitter power. Mount inline preamplifiers between transceiver and power amplifier for high power applications. Other amateur, commercial and special preamplifiers available in the 1-1000 MHz range. Please include \$2 shipping in U.S. and Canada. Connecticut residents add 7-1/2% sales tax. C.O.D. orders add \$2. Air mail to foreign countries add 10%. Order your ARR Rx only or Inline preamplifier today and start hearing like never before!

Advanced Receiver Research

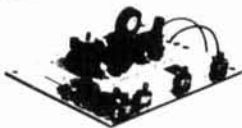
Box 1242 • Burlington, CT 06013 • 203 582-9409



✓ 132

2 METER AMPLIFIERS • ATV CONVERTERS

DISCOVER THE WORLD OF FAST SCAN TELEVISION:



AMATEUR TELEVISION CONVERTERS
ATV-2 420-450 MHz \$ 44.95 Kit
ATV-3 420-450 MHz GaAs-Fet \$ 49.95 Kit
ATV-4 902-928 MHz GaAs-Fet \$ 59.95 Kit

Available in: Kit or Assembled/Tested

Add \$ 2.00 For Shipping and Handling

RF Amplifiers Per Motorola Bulletins

Complete Parts List for

140 Watt or 300 Watt HF Amplifiers per Motorola Bulletins
AN-75R, AN-76Z, EB-27A, EB-43

CAMBRION RF CHOKES

0.15 uh, 0.22 uh, 0.33 uh
4.7 uh, 10.0 uh \$ 1.20

MIXERS

SBL-1 DBL Bal Mixer \$ 6.50
SBL-1X DBL Bal Mixer \$ 7.95

FERRORCUBE DEVICE

VK200-20/4B RF Choke \$ 1.20
56-590-65-3B Ferrite Bead \$.20

POWER SPLITTER/COMBINER

2-30 MHz, 600 Watts (2 Port or 4 Port)



BROADBAND TRANSFORMERS PER MOTOROLA BULLETINS

We Also Stock Hard-To-Find Parts

KEMET CHIP CAPACITORS
METALLIC MICA CAPACITORS
SEMICONDUCTORS
RF POWER TRANSISTORS

For detailed information, please call or write for our free catalog



CCI Communication Concepts Inc.

121 Brown Street • Dayton, Ohio 45402 • (513) 220-9677



✓ 133

antenneX®

"The Magazine For Antenna Experimenters"
IF YOU -

- Have a lousy mobile signal on all bands?
- Need an inexpensive beam for 10 meters?
- Unsure about using vert vs horiz antenna?
- Need a low noise antenna for 160 meters?
- Want to design an antenna just for you?
- Need a program for design and plotting?
- Need to solve a unique problem?
- Know the best antenna for hamsats, etc.?
- Need a disguised mobile antenna?
- Want a cheap automatic coupler system?
- Just want to learn more about antennas?

THEN SUBSCRIBE TO - **antenneX®**
12 MONTHLY ISSUES is only \$11.97 for USA and possessions. \$17.00 foreign.

antenneX®

P.O. Box 8995 Dept. 19
Corpus Christi, TX 78412

✓ 131

Electronic Repair Center Servicing

Amateur Commercial Radio

The most complete repair facility on the East Coast.

Large parts inventory and factory authorized warranty service for Kenwood, Icom and Yaesu.

SEND US YOUR PROBLEMS

Servicing "Hams" for 30 years, no rig too old or new for us.

HAMTRONICS, INC.

4033 Brownsville Road



Trevose, Pa. 19047

215-357-1400



CATALOGS

HAM

- Transceivers
- HF-VHF-UHF
- Antennas
- RTTY-Packet
- Receivers
- Books & Accs.

Only \$1 Postpaid

SWL

- Receivers
- Antennas
- Tuners
- Headphones
- RTTY-FAX
- Books & Accs.

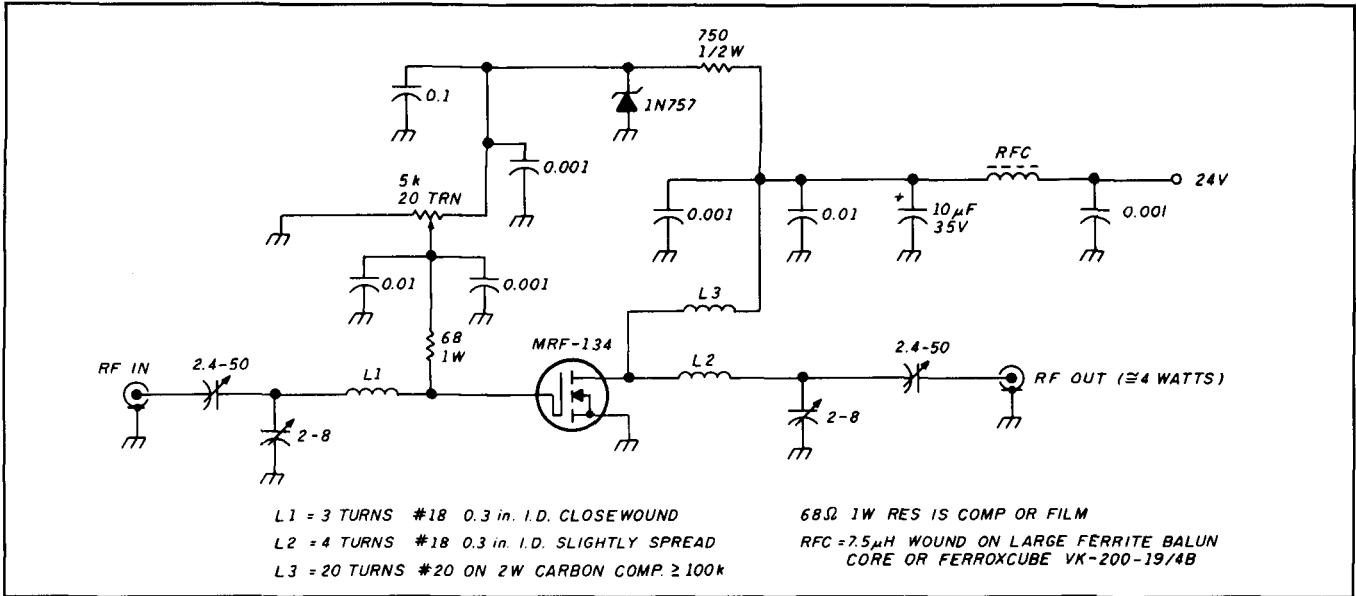
Only \$1 Postpaid

Send to:

Universal Radio

1280 Aida Drive Dept. HR
Reynoldsburg, OH 43068

FIGURE 8



Final amplifier using an MRF-134.

All design decisions are tradeoffs. For example, using the MRF-134 created the need for a small 24-volt supply — but I gained advantages in other areas. First, the FET is guaranteed to deliver rated power into a 30:1 VSWR at any phase angle (no delicate device here!); second, it's capable of more gain in one package than a bipolar; and last, it worked the first time I tried it — a very enjoyable experience after my trials and tribulations with the '3553s.

The circuit is taken largely from the *Motorola RF Data Book* applications note.⁴ Component changes are based on availability and personal preferences. In any RF power amplifier it's essential to keep the ground leads of the device as close as possible to ground on the board. I connected top and bottom foil with a strip of copper shim stock at the point where the source leads leave the device package. The FET itself is on an extremely overrated heat sink; after extended key down periods everything remains at ambient temperature.

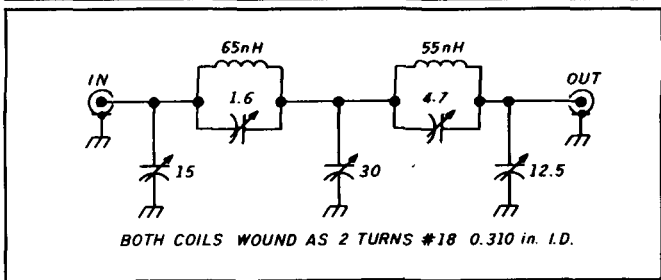
The output filter in **Figure 9** is an elliptical low-pass design. The two parallel resonant circuits are tuned to 313 and 487 MHz with a grid-dip meter; the other caps are adjusted for minimum insertion loss while you watch output power on a wattmeter. My version had a measured insertion loss of under 0.2 dB.

I used a simple comparator on the PTT line from the HF rig to do the T/R switching (see **Figure 10**). The relay is DPDT. It switches 12 and 24 volts to the transmit amplifiers and 12 volts to the antenna relay (a Dow-Key relay I picked up at a local hamfest). The relay provides over 40 dB of isolation during transmit; the GaAsFET sees -4 dBm, well within its capabilities. (I leave it powered on continuously.) This relay should be adequate at power levels of up to 100 watts.

Construction and alignment

This is a sophisticated project and you'll need building experience. If you've had experience with other RF circuitry, you'll find it presents few special challenges. I used pc boards

FIGURE 9



Schematic of the transmit LPF (low pass filter).

for the GaAsFET RF amplifier, filters, and all transmit stages. The LO, mixers, and the T/R switching boards are built “dead bug” style; they function quite well that way. If you are an experienced builder who uses point-to-point techniques at these frequencies, you may want to use that method. I used SMA connectors on small-diameter coax (RG-188) for signal interconnects. You may prefer to use BNCs. Likewise, I used pc board material for housing circuits — you may prefer commercially made enclosures.

I've already mentioned the need to keep grounds short on the final amplifier; the same holds true for the driver stages. This is the strongest argument for using pc boards for these stages. The emitters of the driver transistors are grounded immediately, with minimal lead length.

There are no "peculiarities" of alignment. Align the filters separately, tuning them as desired. It's best to align the transmit stages with a spectrum analyzer. Tune the drivers for best output while observing third-order intermod. This will not occur at maximum power out. The same applies to the final amplifier.

Ideally, the GaAsFET should be aligned with noise figure instrumentation. If that isn't available, tune for maximum noise level by ear, and then detune slightly. The optimum noise fig-

WE SHIP WORLDWIDE

Barry Electronics Corp.

WORLD WIDE AMATEUR RADIO SINCE 1950
Your one source for all Radio Equipment!



We Give You the Best in Amateur and Commercial Radios. Call Us. It's Low W2BIE, Kitty WA2BAP, and Jan KB2RV

KITTY SAYS: WE ARE NOW OPEN 7 DAYS A WEEK.
Saturday & Sunday 10 to 5 P.M.
Monday-Friday 9 to 6:30 PM Thurs. to 8 PM
Come to Barry's for the best buys in town.



ONV Safety belts-in stock

FT-767GX, FT-757GXII, FT-747GX,
FRG-8800, FT-736R, FRG-9600,
FT-4700RH, FT-212/12RH, FT-470

FT-237/237Z77R
FT-111-811
FT-1903/123
FT-1903/7005

ICOM ICS-112AT
IC-202AT/32AT
IC-202AT/32AT
IC-202AT/32AT
IC-202AT/32AT
IC-202AT/32AT

Landmobile HT's
ICOM UHF, VHF, VHS, UHF
MOTOROLA
YAESU FT-2000/2007
UNIDEN REGENCY KING
MARINE ICOM NO. 100, 1000
AUTOMOTIVE ICOM A20 TAD

KENWOOD



TS-440S2AT, R-5000, R-2000, TS-940 SAT, TM
231A/431A, TM-2570A/50A/50A, TR-731A, Ken
wood Service Repair, TM-721A, TM-711/811A,
TM-3030A, TM-205AT, TH-215A, TM-621A, TM
321A, TS-1405, TS-5600S, RZ-1, TS-790A

Budwig ANT. Products
NEL-TECH DVM-100 Digital Voice Keyer
FLUXE 77, 83, 85, 87 Multimeters

Media Mentors
Amateur Radio Course

VoCom/Mirage/Alinco
Tokyo Hy-Power/TE SYSTEMS
Amplifiers &
5/8 HT Gain
Antennas IN STOCK

MICROLOG-ART 1, Air Disk,
SWL, Morse Coach

Professional
Soldering
Station
48 Watts
\$79

METRON
KW HF Mobile
Amplifier
Stocked

Computer Interfaces
Stocked: MFJ-1270B,
MFJ-1274, MFJ-1224, AEA
PK-98, MFJ-1278, PK-232
W/FAX

AR 900 Hand Held Scanner 100
ch. Covers 27-54, 108-174,
406-512 800-950 MHz



EIMAC
3-500Z
572B 6JS6C
12BY7A &
6146B

AEA 144 MHz
AEA 220 MHz
AEA 440 MHz
ANTENNAS

BIRD
Wattmeters &
Elements
In Stock

ALINCO
DJ-500T, DR-110T

FREQUENCY
COUNTERS
1MHz-1.3GHz

COMMERCIAL
& HAM
REPEATERS
STOCKED
WRITE FOR
QUOTES

MOTOROLA AUTHORIZED DEALER
KACHINA COMMUNICATIONS DEALER

AUTHORIZED
SONY
DEALER

DIGITAL FREQUENCY COUNTERS
Opto Electronics model 1300H, D-1300MHz
Long range Wireless
Telephone for export in stock

BENCHER PADDLES,
BALUNS, LOW PASS FILTERS
IN STOCK

MIRAGE AMPLIFIERS
ASTRON POWER SUPPLIES
Saxton Wire & Cable, Int'l Wire
OPTO KEYERS STOCKED

Kantronics
UTU, KAM, KPC II,
KPC 2400, KPC IV,
KAM

SHORTWAVE RECEIVERS
STOCKED

Ten-Tec
Tuner 238

COMET ANTENNAS
STOCKED

SANGEAN Portable Shortwave Radios

New TEN-TEC
Corsair II, PARAGON
OMNI V

AMERITRON AUTHORIZED DEALER

For the best buys in town call:
212-925-7000
Los Precios Mas Bajos en Nueva York
WE SHIP WORLDWIDE!



IC-R71A, 751A, 781, 26AH, 38A, 46A, Micro214,
R-7000, IC-765, IC-375A, 275AH, 3210A, 475A/
H. 735, IC-900, IC-228H, IC-725, IC-448A



SMART PATCH
CES, Simpler Autopatch 510 SA, Win Patch FM
Twinverter, To Your Telephone, Great For
Telephone Calls From Mobile To Base, Simple
To Use, 1105A/1105AB

PRIVATE PATCH V, Duplex 8000

TUNERS STOCKED:
NYE MBV-A 3 Killowatt Tuner



Motorola
Radius P-100

SHORTWAVE RECEIVERS
STOCKED

Ten-Tec
Tuner 238

COMET ANTENNAS
STOCKED

SANGEAN Portable Shortwave Radios

New TEN-TEC
Corsair II, PARAGON
OMNI V

AMERITRON AUTHORIZED DEALER

DOWN EAST MICROWAVE



MICROWAVE ANTENNAS AND EQUIPMENT

• Loop Yagis • Power Dividers • Linear Amplifiers • Complete
Arrays • Microwave Transverters • GaAs FET Preamps
• TROPO • EME • Weak Signal • OSCAR • 902 • 1269 • 1296
• 2304 • 2400 • 3456 MHz
2345 LY 45el loop Yagi 1296 MHz 20dBI \$99
1345 LY 45el loop Yagi 2304 MHz 20dBI \$80
3333 LY 33el loop Yagi 902 MHz 18.5dBI \$99

Above antennas assembled and tested. Kits available.

Add \$8 UPS S/H, \$11 West of the Mississippi

MICROWAVE LINEAR AMPLIFIERS SSB, ATV, REPEATER, OSCAR

2316 PA	1w in 18w out	1240-1300 MHz	13.8V	\$265
2335 PA	10w in 35w out	1240-1300 MHz	13.8V	\$315
3318 PA	1w in 20w out	900-930 MHz	13.8V	\$265
3335 PA	10w in 40w out	900-930 MHz	13.8V	\$320
23LNA	preamp 0.7dB N.F.	1296 MHz		\$ 90
33LNA	preamp 0.9dB N.F.	902 MHz		\$ 90

Add \$5 shipping UPS/48

LMW 1296 & 2304 MHz transverter kits in stock

Write for free catalog

DOWN EAST MICROWAVE
Bill Olson, W3HOT
Box 2310, RR 1, Troy, ME 04987
(207) 948-3741

NEW! No Tune Microwave Linear Converters

Board level RX/TX transverter modules and local oscillator: kit or assembled/tested. Linear operation allows all modes, ATV, SSB, Digital, Packet, FM.

Available for: 903, 1269, 1296, 2304, 3456 MHz

COMPLETE KITS

SHF 900 K	with integral LO for 902 MHz	\$110
SHF 1240 K	for 1240-1300 MHz - specify 1269 or 1296 base	\$135
SHF 2304 K	for 2300-2450 MHz - MODE S downlink package available	\$185
SHF 3456 K	for 3456 MHz	\$185
SHF-LO	LO kit only, with XTL, 540-580 MHz, +10 - +14 dBm out	\$ 60

Call or write for details on complete transverters and options.

SHF Systems
P.O. Box 666
Nashua, NH 03061
(603) 673-1573
John Molnar, WA3FTD

Down East Microwave
Box 2310, RR#1
Troy, ME 04987
(207) 948-3741
Bill Olson, W3HOT

New York City's LARGEST STOCKING HAM DEALER COMPLETE REPAIR LAB ON PREMISES

"Aqui Se Habla Espanol"
BARRY INTERNATIONAL TELEX 12 7670
MERCHANDISE TAKEN ON CONSIGNMENT
FOR TOP PRICES

Monday-Friday 9 A.M. to 6:30 P.M. Thursday to 8 P.M.
Saturday & Sunday 10 A.M. to 5 P.M. (Free Parking)

IRTILEX "Spring St. Station", Subways: BMT
"Prince St. Station", IND "F" Train-Bay Station
Bus: Broadway #6 to Spring St. Path 9th St./6th Ave
Station

COMMERCIAL RADIOS
STOCKED: ICOM, Motorola,
MAXON, Standard,
Yaesu. We serve municipal,
business, Civil
Defense, etc. Portables,
mobiles, bases, re-
peaters.

ALL
SALES
FINAL

We Stock: AEA, ARRL, Alinco, Ameco, Ameritron, Antenna Specialists,
Astatic, Astron, B&K, B&W, Benchner, Bird, Butler, CDE, CES, Cushcraft,
Dawson, Eimac, Henry, Heil, Hustler, Hy-Gain, Icom, KLM, Kantronics, Larsen,
M.J.F., J.W. Miller, Mirage, Nye, Palomar, RF Products, Saxton, Shure,
Tempo, Ten-Tec, TUBES, Yaesu, Vibroplex, Duplexers, Repeaters, Scanners,
Radio Publications, Uniden, Kenwood, Maxon, RFC

WE NOW STOCK COMMUNICATIONS SYSTEMS

HAM DEALER INQUIRES INVITED PHONE IN YOUR ORDER & BE REIMBURSED

COMMERCIAL RADIOS stocked & serviced on premises.

Amateur Radio Courses Given On Our Premises, Call
Export Orders Shipped Immediately. TELEX 12-7670

FAX: 212-925-7001

INTERFERENCE?



- ★ Interference Location
- ★ Stuck Microphones
- ★ Cable TV Leaks
- ★ Security Monitoring

- ★ VHF and UHF Coverage
- ★ Computer Interface
- ★ Speech Synthesizer
- ★ 12 VDC Operation

New Technology (patent pending) converts any VHF or UHF FM receiver into an advanced Doppler shift radio direction finder. Simply plug into receiver's antenna and external speaker jacks. Uses four omnidirectional antennas. Low noise, high sensitivity for weak signal detection. Call or write for full details and prices.

DOPPLER SYSTEMS, INC. P.O. Box 31819
Phoenix, AZ 85046 (602) 488-9755

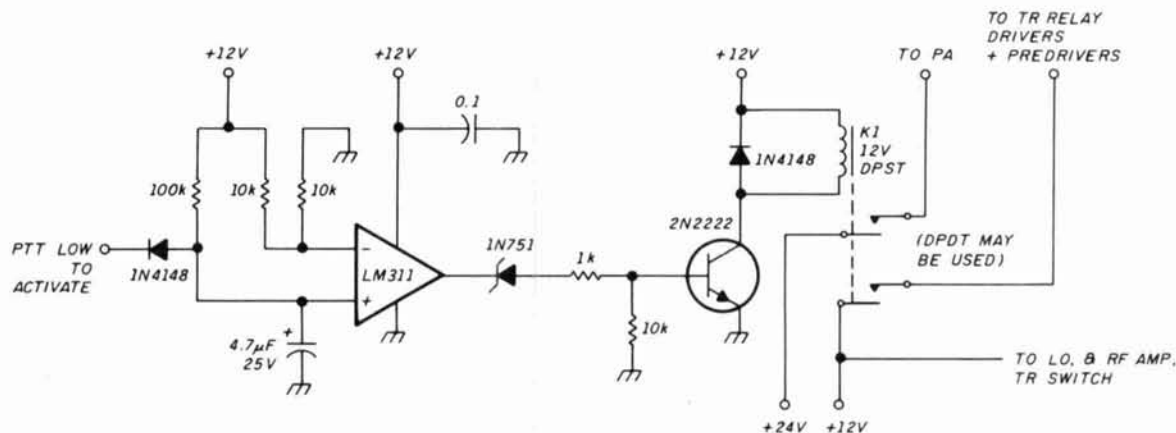
"ONLINE" U.S. CALL DIRECTORY

Hamcall service gives you all hams via your computer & modem. Updated each month! Only \$29.95 per year. Unlimited use - you pay for phone call.

BUCKMASTER PUBLISHING
Route 3, Box 56
Mineral, Virginia 23117
703/894-5777 visa/mc 800/282-5628

Tell 'em you saw it in HAM RADIO!

FIGURE 10



T/R switch schematic.

ure match isn't far from max gain, but that's about as quantitative as I can get.

Performance

On-the-air results have been good. I actually used the transverter for quite a while at the 250-mW level, and surprised myself by working most of peninsular Florida. I made some of my best contacts with an indoor antenna and the pieces of my project spread across my desk. Moving up to 4 watts put me within 3 dB of the mainstream of off-the-shelf 2-meter SSB rigs (that's about half of one S-unit), and to a level that could be used with commercial amplifiers. It also netted me contacts with five southeastern states using a small antenna at rooftop height.

I'd like to thank Jim Hagan, WA4GHK, for his part in the conceptual design of this circuit and for helping me with on-the-air tests. **hp**

Parts sources

Digi-Key

701 Brooks Avenue South, P.O. Box 677,
Thief River Falls, Minnesota 56701-0677

A broad line of passives, semiconductors, and tools

Mini-Circuits

P.O. Box 350166, Brooklyn, New York 11235-0003

Mixers, splitters, hybrids, etc.; will sell to individuals

Amidon Associates

12033 Otsego Street, North Hollywood, California 91607

Toroids, ferrites, inductive components

Communications Concepts, Inc.

121 Brown Street, Dayton, Ohio 45402

RF parts and kits, hard-to-find trimmers, chip caps, transistors, ATV parts

RF Parts

1320 Grand Avenue, San Marcos, California 92069

RF power devices, GaAsFETs, and many other transistors

REFERENCES

1. Joe Resert, W1JR, "Low Noise GaAsFET Technology," *Ham Radio*, December 1984, pages 99-112.
2. Bob Lombardi, WB4EHS, "Build Narrowband Filters," *Ham Radio*, March 1986, pages 10-21.
3. Joe Resert, W1JR, "High Dynamic Range on 2 Meters," *Ham Radio*, November 1985, pages 54-64.
4. Technical Staff ed., *Motorola RF Device Data Book*, Arizona: 1986.

LOGWRITE™

Bring your station into the computer age with LOGWRITE, the menu driven, user friendly logging program written by Ed Troy (NG3V). LOGWRITE is the perfect accessory for the complete ham station. It simplifies your operation and gives you the competitive edge in contesting and DX'ing. LOGWRITE works with all IBM PCs and compatibles.

LOGWRITE's unique split screen feature allows for simultaneous logging and text processing. Logging features include:

- Instant call sign or prefix search
- Print, Edit, or View records
- Plenty of room for notes & addresses
- Automatic time/date stamping

Text processor features automatic word wrap, backspace correct, and scrolling. Throw away your pen and paper!

To order your copy of LOGWRITE, complete with instruction manual, send \$24.95 (Pa. residents add \$1.50 sales tax) to:

Aerospace Consulting
P.O. Box 536, Buckingham, PA 18912
(215) 345-7184

Or call 1-(800) 345-4156 ext. 54 to order with Visa/Master Card. (Please specify 3.5 or 5.25 inch floppy.)

SYNTHESIZED SIGNAL GENERATOR

MADE IN USA



MODEL
SG-100F
\$429.95
delivered

- Covers 100 MHz to 199.999 MHz in 1 kHz steps with thumbwheel dial
- Accuracy +/- 1 part per 10 million at all frequencies
- Internal FM adjustable from 0 to 100 kHz at a 1 kHz rate
- External FM input accepts tones or voice
- Spurs and noise at least 60 dB below carrier
- Output adjustable from 5-500 mV at 50 Ohms
- Operates on 12 Vdc @ 1/2 Amp
- Available for immediate delivery • \$429.95 delivered
- Add-on accessories available to extend freq range, add infinite resolution, AM, and a precision 120 dB attenuator
- Call or write for details • Phone in your order for fast COD shipment.

VANGUARD LABS

196-23 Jamaica Ave., Hollis, NY 11423
Phone: (718) 468-2720 Mon. thru Thu.

PRE-AMPS
Low noise, High Gain: 2 Mtr- 1.2 Ghz
900 Mhz. Doubler
Input 451-464 mhz. = 902 - 908 mhz.
900 mhz. P.A. 10 to 16 watt
Linear & FB 2 & 1K watt inputs
1200 mhz. P.A. low drive
1 watt in = 18 watts
440 mhz. P.A. (linear)
2 to 3 watts input
18 watts out
270 & 344 mhz. P.A. (FB)
2 to 3 watts input
33 - 45 watts
ATV amplifiers (70 cm)
also for 33 CM.
TRANSMITTERS: 902 - 928 Mhz.
TRANSCIVERS: 902 - 928 Mhz.
TRANSVERTERS
Three options (900 KHz. band)
WRITE OR CALL FOR INFORMATION
Please send 2 25c stamps
for catalogue

pauldon ASSOCIATES
210 Utica St.
Tonawanda, N.Y. 14150
716-692-5451